

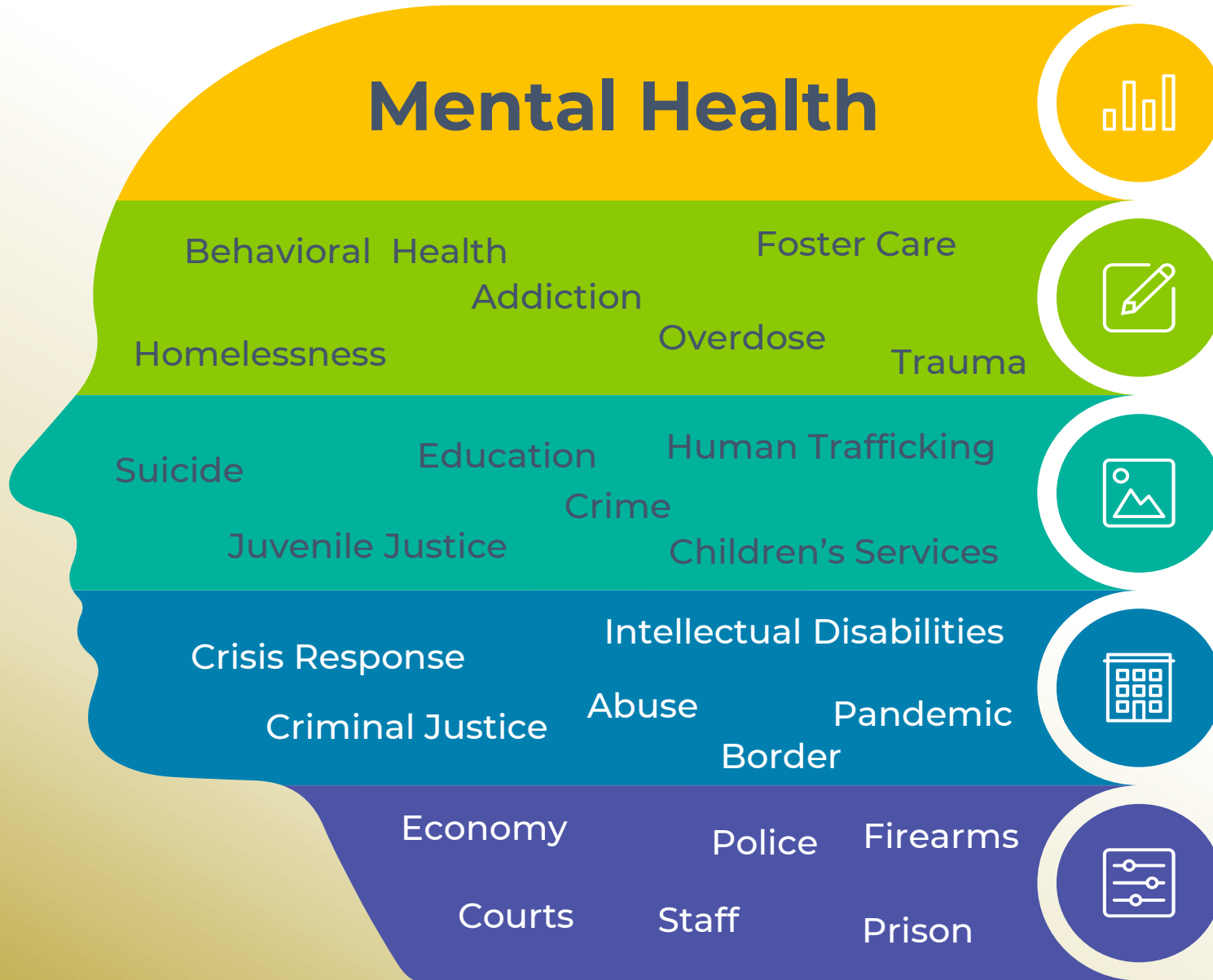
Mercurio Analytics

Recovery-Oriented
Approach for
Population Health

Minky Kernacs
CEO & Co-Founder

Government Data: Optimized

Empowering government agencies to be results-driven, work collaboratively, and leverage comprehensive data insights to improve outcomes and achieve population health goals effectively and efficiently.



Traditional Model of Care

Approach & Impact

Individualistic



Disease Oriented



Fragmented Care

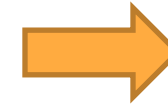


- Prison**
- Foster Care**
- Addiction**
- Homelessness**

- Symptom Suppression
- Disease Oriented
- Fragmented Care
- Stigma and Discrimination
- Provider Directed
- Not Continuous Improvement

Traditional Model of Care

Approach & Impact



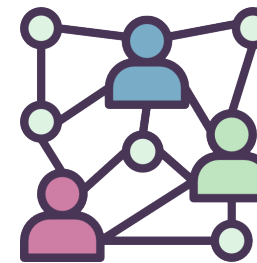
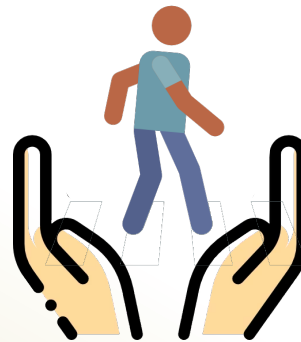
Reactive
Passive

Prison
Foster Care
Addiction
Homelessness

Recidivism
Service Centric
Disengaged Treatment

Recovery-Oriented Model

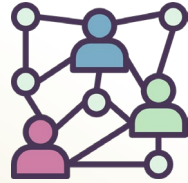
Approach & Impact



Prison
Foster Care
Addiction
Homelessness

Reintegration
Supports

Recovery-Oriented Model



Reintegration
Supports

Person Centric

Recovery Oriented

Continuity of Care

Engaged Treatment

Community-Based Services

Peer Support & Inclusion

Safety & Risk Management

Staff Satisfaction & Well-Being

Symptom Reduction & Functional Improvement

Recovery-Oriented Model



- Person Centric
- Recovery Oriented
- Continuity of Care
- Engaged Treatment
- Community-Based Services
- Peer Support & Inclusion
- Safety & Risk Management
- Staff Satisfaction & Well-Being
- Symptom Reduction & Functional Improvement

Evidenced Based

Real-Time Data

Holistic, Person-Centric Approach

Health Equity & Social Determinants

Coordinated and Collaborative

Exemplify Diversity, Equity, & Inclusion

Community Focused

Proactive

Engaged